

SPRING 2014  
THEDRAWINGMAGAZINE.COM

# Drawing

Finding  
Life  
Through

## Motion

### ANATOMY FOR ARTISTS

12 Subtle  
Differences  
in Men and  
Women

page 54

A New  
Approach  
to the  
**COMIC  
STRIP**  
page 30

Aquila (detail)  
by Leah Yerbe



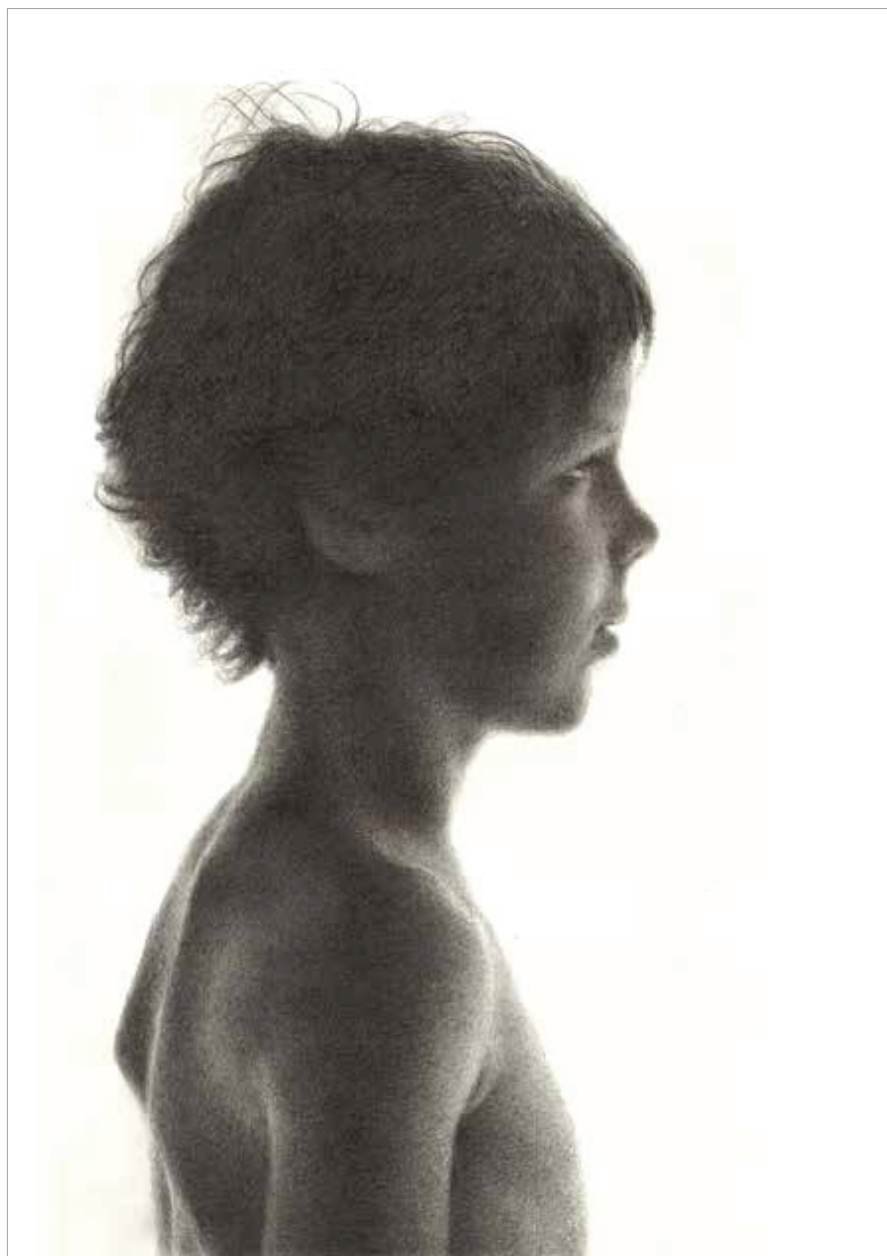
All About **INK**

7 ARTISTS AND  
THEIR TECHNIQUES



INTRODUCTION TO INKS AND PENS

# HONORABLE MENTIONS



**Susan Brinkmann**  
**Boy**

2012, graphite, 23½ x 15¾. COLL TK.

"This drawing is the first in a series still in the making that means to represent Life with its never ending circle," says Susan Brinkmann, a British artist who now lives in the Netherlands. "Boy, at the beginning of the series, is a symbol of innocence, full of expectation and curiosity about what life is going to bring. The next pictures are about love and hate, family, power, and survival." The drawing was made with Caran d'Ache Grafstone 6B graphite pencils.

FOR MORE INFORMATION, VISIT [WWW.FACEBOOK.COM/SUSANBRINKMANNART](http://WWW.FACEBOOK.COM/SUSANBRINKMANNART) OR [HTTP://SUSANBRINKMANN.BLOGSPOT.COM](http://SUSANBRINKMANN.BLOGSPOT.COM)

OPPOSITE PAGE

**Amber-Rose Hulme**  
**Venetian Man No. 2**

2013, pastel, 12¾ x 28.  
Private collection.

"Relaxed, my Venetian man rests against a door, its rough weathered texture contrasting with the peaceful image," says Australian artist Amber-Rose Hulme. "Texture itself became my subject, and consumed by the abstract shapes of varying values and textures, I no longer saw a distinction between the door and the man. I did not see my character again until all the fragmented forms were in place, when finally, stepping back, I saw that he had appeared, visually separate from the door yet created equally."

FOR MORE INFORMATION, VISIT [WWW.ARTBYAMBERROSE.COM.AU](http://WWW.ARTBYAMBERROSE.COM.AU).



**Philip Carpenter**  
**Doorways—Chaco Canyon**

2012, graphite, 19 x 12. COLL TK.

"As an architect, I am drawn to the built remains of a past culture—they are filled with a sense of wonder and mystery," says Philip Carpenter. "This is a fairly well-known subject: the Anasazi ruins at Chaco Canyon, in New Mexico. The indigenous materials are very colorful, but I believe the reliance upon space and light and the feelings evoked with graphite brings a focus to the essential mystery of this place—its timelessness. For me, this piece will be a success if it conveys this wonder and mystery to the viewer."

FOR MORE INFORMATION, VISIT [WWW.TKTKTKTKTK.COM](http://WWW.TKTKTKTKTK.COM)